



GOLDFIELDS PROTECTIVE COATINGS

ATFT GPC Unit Trust ABN 59 142 122 701
PO Box 2050, Boulder WA 6432
Tel: (08) 9091 1339
Email: admin@goldfieldspc.com.au
www.goldfieldspc.com.au

AUSJET

By email: support@ausjetinc.com.au

27 August 2024

To AUSJET,

**RE: AUSJET / ADCVA Innovation Safety (Contracting Company) Awards
Nomination – Goldfields Protective Coatings**

Please allow me to nominate Goldfields Protective Coatings (GPC) as a contracting company for the AUSJET / ADCVA Innovation Safety Awards 2024.

I would like to present how we operate at GPC and show how we have made a commitment to establishing a safe and encouraging work environment in all aspects of wellbeing. Please kindly refer to the presentation that follows this letter.

We have achieved safety and innovation through the support of movements, such as **R U OK** and **Beyond Blue**. We have also been focusing on innovation and challenging the “always done it like this” mentality, by using new technologies such as robot cleaners to eliminate confined space risks, and thermal cameras to provide more arcuate work zones minimalizing environmental impacts, just to name a few.

If you have any questions or would like to further discuss, you are more than welcome to contact me on 0400 146 614 or by email at Adrian@goldfieldspc.com.au

Yours faithfully,

Adrian Rodier
Manager
Goldfields Protective Coatings Pty Ltd

Mental Health

In late 2023, our local newspaper (Kalgoorlie Miner) printed an article about GPC, emphasising the effort we put in to welcoming and supporting everyone in the battle against poor mental health. A snippet of the article is shown in the below image.

FIRM IN BID TO BEAT THE BLUES

CARWYN MONCK

A Goldfields mining services company has turned blue to raise awareness for mental health and suicide prevention.

Goldfields Protective Coatings has installed blue signage and number plates on their fleet of light and heavy vehicles, and temporarily adopted blue high-visibility work shirts in support of R U OK? Day.

GPC manager Adrian Rodier said the family-owned business had experienced some "close calls" in the past with employees who had struggled with their mental health.

"A big driver of the (R U OK? Day initiative) was that we have had a couple of incidents over our time," he said.

"We know a bit more about mental health now, but there were a couple of instances when we didn't have that education and we didn't pick things up."

GPC's mobile fleet now features blue signage which was displayed across six Goldfields mining operations last Thursday during national R U OK? Day.

The fleet includes four vacuum trucks and about 20 utility vehicles.



Goldfields Protective Coatings' Adrian Rodier, Kelsea Te Puke, Vanessa Rodier, Michael Jones, Jesse Takaa, Zane Smith, David Rose, Mick Darwen, and Muhammad Ali. They are pictured next to GPC's mobile fleet which features blue signage in support of R U OK Day. Picture: Carwyn Monck

GPC industrial services supervisor Mick Darwen said the company regularly operated on mining sites throughout the Goldfields.

Mr Darwen said he hoped the blue signage would act as a "mobile billboard" and spark discussions surrounding positive mental health within the Goldfields mining industry.

"If we can spark a conversation with one person on one of the sites then it's worth it," he said.

Mr Darwen said the "extreme" nature of GPC's work environment requires their employees to work collaboratively and foster positive mental health.

"We deal with anything from septic (materials) to chemicals to 40,000 PSI water blasting," he said.

"Because we're all in the same boat, what we do is pretty extreme and so... you need your (colleagues) to be well."

"I've had a few workmates who have (struggled with their mental health) and when your mates aren't all right, it's a pretty scary thing."

Mr Rodier said while the blue high-visibility shirts would only be worn during a two-week period, the company was considering making the uniform a permanent fixture to create "sustained awareness" for mental health.

GPC staff also raised \$1200 during an internal fundraiser to support R U OK? Day.

**Lifeline 13 11 14
beyondblue 1300 22 4636**

At GPC, we care deeply about the safety and wellbeing of people, especially those who are working long hours away from their families.

We have painted several trees blue in memory of those lost by suicide, and to raise awareness about mental health. While many trees have tragic backstories, we at GPC see the movement in a positive light. In our opinion, the blue trees represent hope. They are not monuments. We proudly display a framed photograph in our office of one of the trees we painted.

We also display 'R U OK?' signage on our vac units, fleet & mobile workshops. This is to inspire Australian communities and site workers to look after each other, by encouraging people to ask "Are you OK?".

Our fleet also has the blue reflective stripe for mental health.



Vacuum Loading

Our vac trucks are kitted up with the latest gear for the sole purpose of safety and efficiency.

- Our vac trucks have upgraded light packages, giving our employees and other trades 360 degrees of light. This reduces the likelihood of slips, trips and falls, as well as decreasing any blind spots when reversing.
- All our vac trucks have upgraded driving lights to increase safety at night and limit driver fatigue.
- GPC has invested in a Gerrotto Robot limiting the need for confined space entry, minimizing operator fatigue and keeping our operators away from hazardous materials.
- We have reduced the lengths of our vac hoses to 15m to decrease any sprains or strains to our employees when moving hoses.
- Fridges are installed in all our trucks for employees to fill with drinks and food to assist hydration and fatigue management.



(Above)

Rigs shining some light on the situation.

(Below)

Gerrotto Robot in action

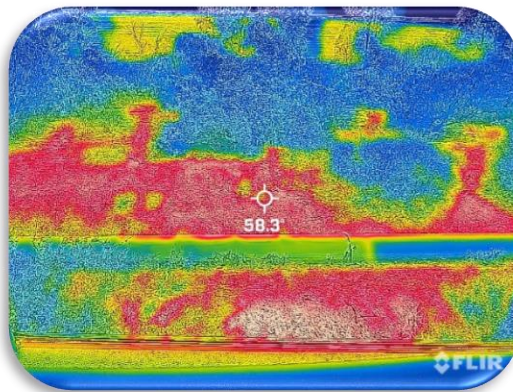


Drain/Pipe Cleaning

GPC strives to have the latest technology on the market to ensure smooth and safe operation of the task at hand, which includes safety of the workers. For drain/pipe cleaning, GPC uses the latest Cappolotto Combi Unit which is controlled remotely. It minimises manual handling and ultimately reduces worker fatigue and boosts safety by being out of the line of fire.

For locating problemed areas, GPC uses a thermal imaging camera which frees up more time for GPC and the customers to set up safe working spaces. It also helps to reduce operator fatigue and tension because the operators know exactly where the blockage is, and it therefore alleviates client schedule pressure.

At GPC, we are big on being organised to eliminate stress for the workers. An example of that is supplying them with the latest and widest range of cleaning nozzles, in labelled boxes with foam cut outs for each fitting, rather than rolling around loosely. This reduces time and stress for the employees when trying to locate appropriate nozzles for the task.



(Above)

Thermal camera being used in multiple environments, including an image from the camera itself, showing flow and restrictions.

(Below)

Drain heads laid out neatly in carry boxes for safety and convenience + our Cappolotto Combi Unit



HP/UHP

GPC have introduced the following containers for task and resource efficiency, so that ultimately, the workers are organised and happy due to seamless job operation. We have them pre-packed and ready for the workers to grab and go.

'Blast bags'

We have implemented individual 'blast bags' which contain all the relevant PPE for the job ahead. We ensure each of the bags are personalised by having the correct size PPE as well as preferred products.

'Blast boxes'

Our 'blast boxes', which are clearly labelled for communal use, contain repair kits, burst discs, nozzles and laminated instructions on how to carry out the repairs. We ensure these boxes are checked before and after use, so that they're fresh and stocked for the next person.

'Pump bags'

Each bag contains the correct TST for each pump weather it's as little as 5000psi or 40000psi. This allows for less room for error, and it ensures that all operators can proceed with their work scope safely with the best possible gear. The bags are also waterproof to protect the TST against damage.

'Attachment boxes'

These contain items such as a Barracuda 11L/min-18L/Min-38L/min, Munro, Orbijet or Masterjet, depending on the pump being used. Each box contains the appropriate spare nozzles, rebuild kit, lubrication if needed and a laminated set of instructions on how to repair. We've found that this is the safest and most efficient way to have them as it eliminates guess work for the operator, and it reduces the risk of incidents (via incorrect use).



Other Physical/Mental Wellbeing, Health & Safety Initiatives

IN HOUSE ACCOMMODATION

We have several bedrooms at the GPC yard so that all our FIFO workers can be monitored for fatigue, wellbeing and comfort.

WARM WELCOME

When the FIFO workers enter the yard after a long day on the job, they are greeted with a large sign showing a photo of our team, and a message reminding them that they are a part of the GPC family, and that we want them home safe every day.

EMITTING GOOD VIBES

At the GPC yard, we've made the living areas like a home away from home. The areas are decorated with luscious plants as we believe it enhances the overall appearance and leads to a happy mood. We also have multiple common areas to share meals and unwind. We aim for the community/family feel and do our best to avoid the common "prison camp" vibe most worker camps give.

COMFY ROOMS

In addition to a comfortable bed, each bedroom has a TV (with Foxtel), split system air conditioner and a private ensuite. We hire a professional cleaning company to service the rooms ever few days so that their environment is constantly fresh.

GYM MEMBERSHIPS

We offer gym memberships to all employees at no cost to them, as well as weekly meal subsidies.

VEHICLES

All staff have access to work vehicle. For vehicle safety, we have introduced yellow coatings for the yard. E.g. shed posts, carport posts and gates. We have installed mesh along our fence perimeter for privacy, however, we've ensured that the mesh on the front gate is transparent so that vehicles exiting the yard can see oncoming traffic prior to being exposed to the road.

YARD SECURITY

The fencing around the perimeter of our yard is fitted with barbed wire and is fully covered by CCTV, excluding the inner living areas for privacy and comfort of the yard residents.

BREATHALYZER

Almost all the clients we service require our workers to blow into a breathalyzer at their site gates. For an extra layer of safety, we have a breathalyzer machine installed in our yard and it's one of our strict pre-start procedures which is monitored daily.

The following two pages show photos of some of the above bullet points.



